

PLYCO...leading the way
to **BETTER** sliding door
systems for farm and
industrial buildings!

PLY-TRAC

Sliding Door Track
and Hardware

- **VERSATILE**
offers you a choice of
mounting brackets for
various applications
- **SAVES INVENTORY \$\$\$**
stock only one track,
and with the option
track brackets, build any
style sliding door

- **Made of Heavy Duty
14 Gauge Steel**

Call our offices for more information 1-800-558-5895

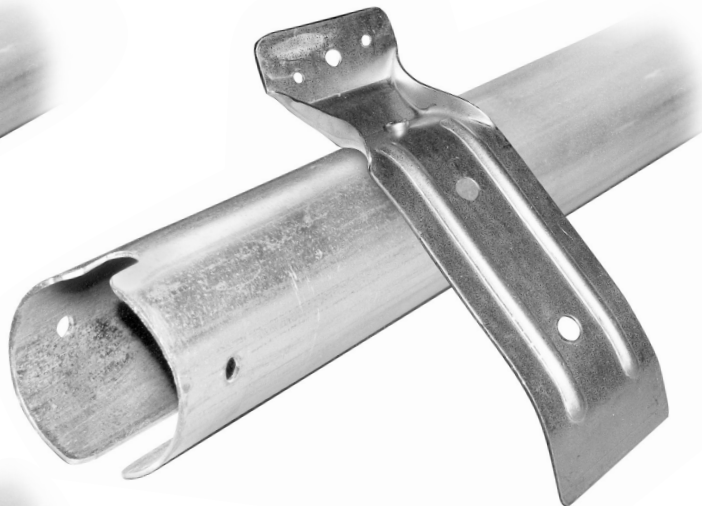
PLYCO
CORPORATION

Elkhart Lake, WI 53020

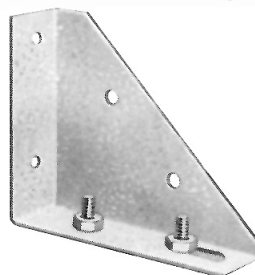
USA 800-558-5895
INTERNATIONAL 920-876-3611
Fax 800-257-5926 Fax 920-876-3527



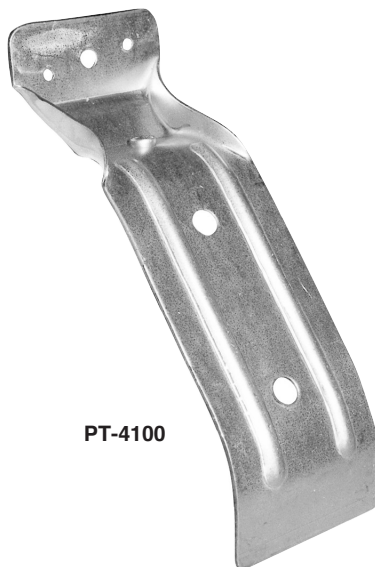
NOS. PT-1081
THRU PT-1202
(Brackets shipped seperately)



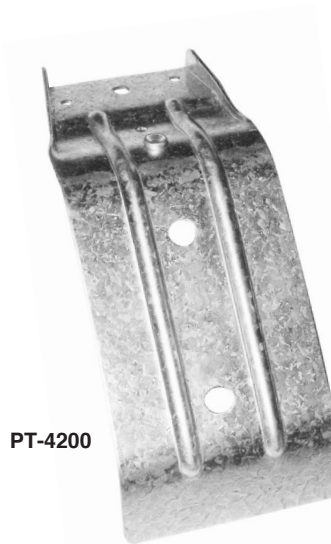
119300



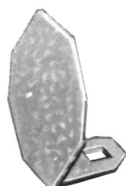
PLY-TRAC **ACCESSORIES** **& HARDWARE**



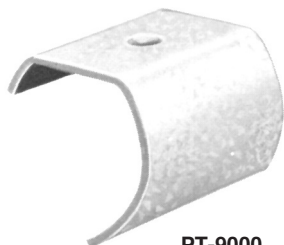
PT-4100



PT-4200



131000



PT-9000



PT-4000



PT-4796

Due to Plyco Corporation's ongoing commitment to product improvement, we reserve the right to change, without notice, product specifications, availability.

PLYCO
CORPORATION
PO BOX 386 • ELKHART LAKE, WI 53020

www.plyco.com 800/558-5895 FAX: 800/257-5926
INTERNATIONAL 920/876-3611 FAX: 920/876-3527

WINDOWS • WALK DOORS • WALL VENTS • RIDGE VENTS
SLIDING DOOR TRACK • SLIDE DOOR RAILS • PLY-FOIL INSULATION
HORSE STALLS • FASTENERS & CLOSURES • SPECIALTY PRODUCTS